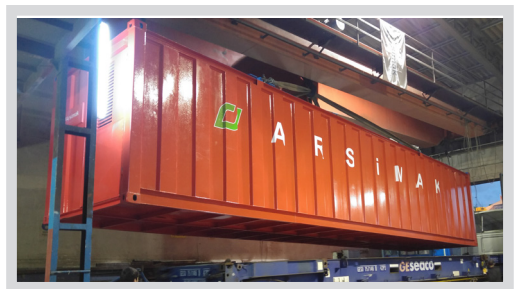




Eco-cycle® mobile wwtp systems designed as a simple solution for residential places that needs domestic wastewater treatment. **Eco-cycle®** provides easy installation and operation with high efficiency treatment process called “ **Continuous system fix bed activated sludge process**”

Eco-cycle® compact systems contains all necessary stages, such as physical treatment (primary treatment), aeration, clarification, disinfection, sludge storage section and all the mechanical - electrical equipments, piping, and instrumentation inside its compact structure as a mobile system.



NO wet mechanical parts in the Eco-cycle®



NO wet pump in the Eco-cycle®



NO wet electrical parts in the Eco-cycle®

Advantages

- Recycling for irrigation
- Higher Outlet Water Quality
- Silence and Odorless
- High Efficiency In Different Flow Rates
- Low Power Consumption
- Resistant to Different Temperature
- Less Space Requirement
- Low Investment And Maintain Costs
- Full Automation With PLC
- Short Delivery Time
- Easy Installation & Commissioning

Applications

- Social House Projects
- Worker / Labor Camps
- Drilling Camps
- Industrial Facilities
- Hotels
- Military Bases
- Summer Residentials
- Refugee Camps
- Villages and Municipalities
- Schools



Eco-cycle® Effluent Pollutant Rates

BOD5	<25 mg/l
COD	<125 mg/l
TSS	<35
pH	6-9

* Maximum Effluent Values : (91/271/EEC Council Directive Table 1)

Arsimak®

Ecocycle®

Compact Sewage Treatment



COMPONENTS



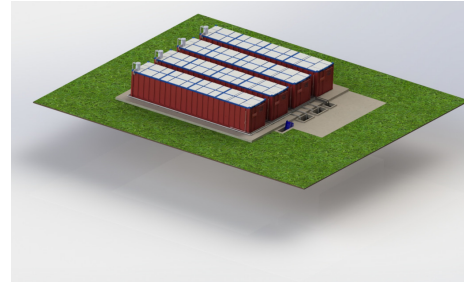
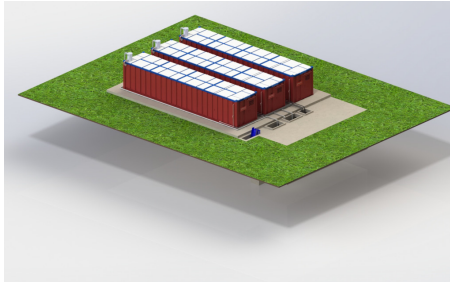
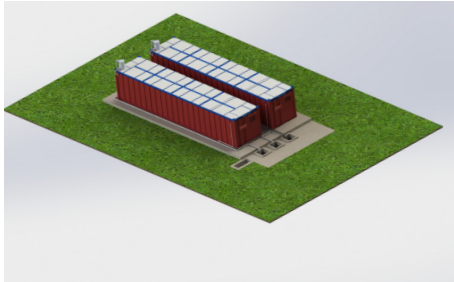
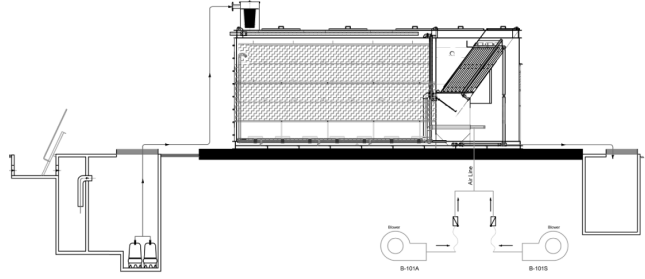
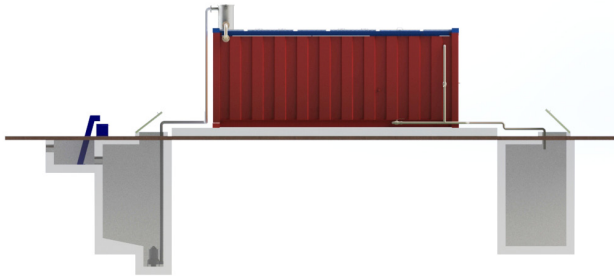
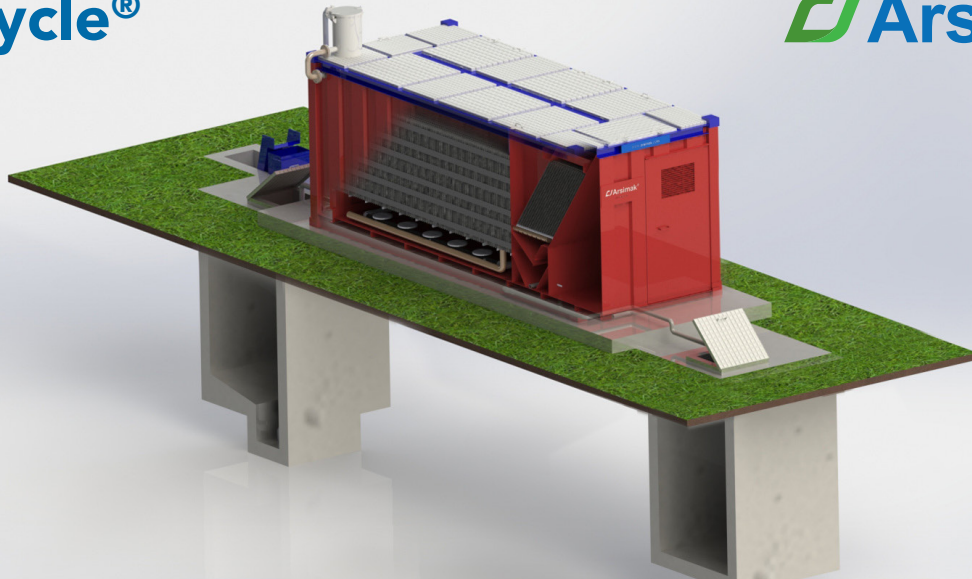
SIEMENS

www.arsimak.com
info@arsimak.com

Arsimak®
Environmental innovation

Ecocycle®

Arsimak®



MODEL	EQUIVALENT POP.	CAPACITY m3/day	DIMENSIONS (BxLxH) cm	NO. OF TANKS
Ecocycle® 50	50	10	226x225x226	1
Ecocycle® 100	100	20	226x315x280	1
Ecocycle® 200	200	40	226x515x280	1
Ecocycle® 300	300	60	226x765x280	1
Ecocycle® 400	400	80	226x940x280	1
Ecocycle® 500	500	100	226x1115x280	1
Ecocycle® 600	600	120	226x1200x280	1
Ecocycle® 800	800	160	226x1350x280	1

Water consumption is considered 200 liters per person per day in the above list. For specific projects, where wastewater flow is not known and especially for touristic projects please refer to Arsimak for Ecocycle® unit selection.

For offshore transport, Ecocycle® sizes will be standart container dimensions.

www.arsimak.com
info@arsimak.com

Arsimak®
Environmental innovation